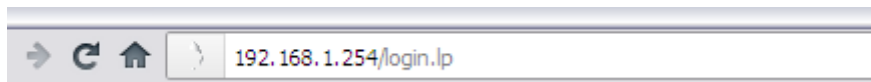



# Technicolor TG589vn przekierowanie portu

Logujemy się do panelu administracyjnego pod adresem **192.168.1.254** przy pomocy użytkownika **admin** i hasła **admin**.



Technicolor TG589vn technicolor



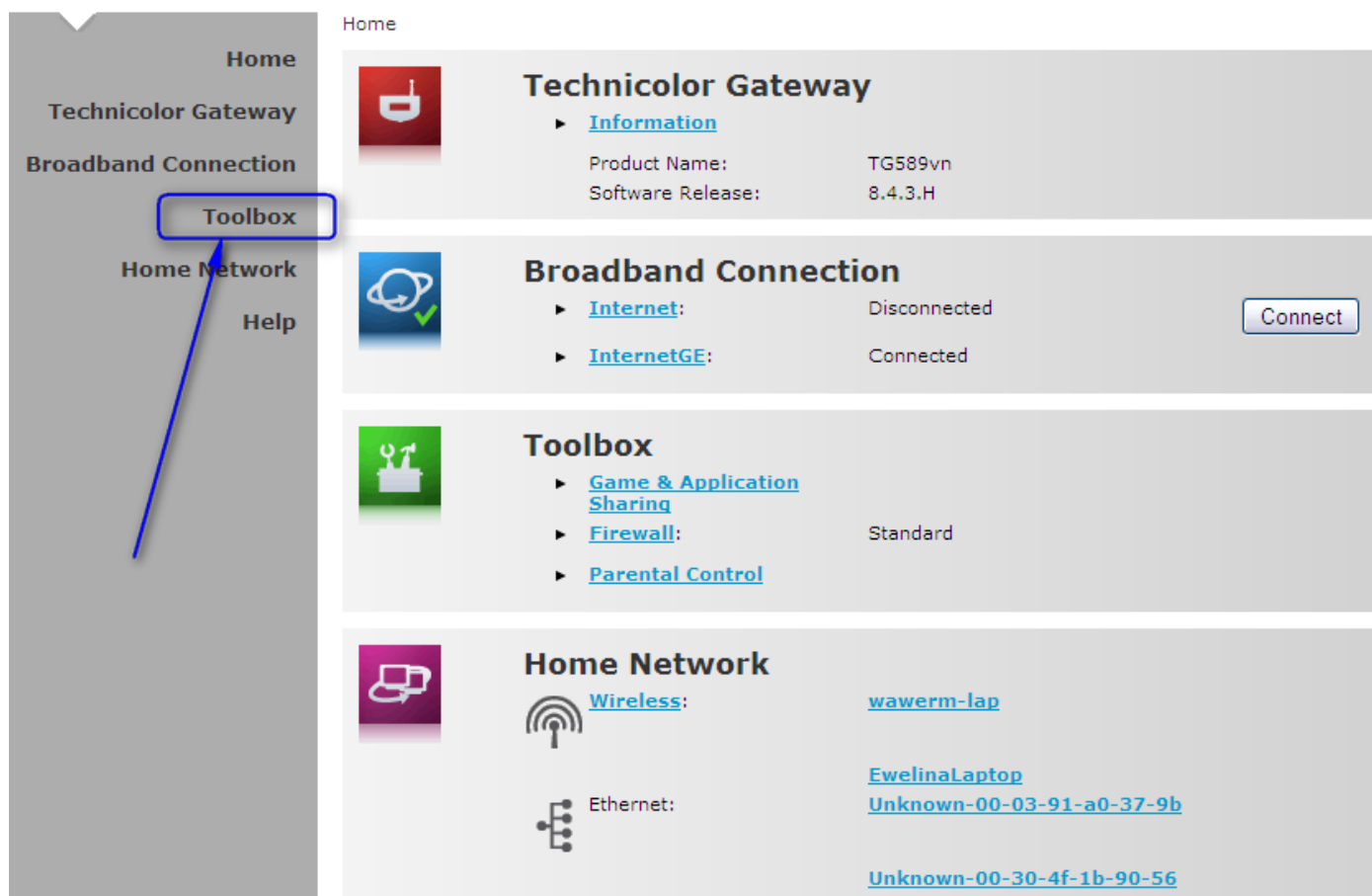
### Login

Enter your username and password to access your Technicolor Gateway.

Username:

Password:

Przechodzimy do menu **Toolbox**



Home

Home  
Technicolor Gateway  
Broadband Connection  
**Toolbox**  
Home Network  
Help

**Technicolor Gateway**

- ▶ [Information](#)
- Product Name: TG589vn
- Software Release: 8.4.3.H

**Broadband Connection**

- ▶ [Internet](#): Disconnected
- ▶ [InternetGE](#): Connected

**Toolbox**

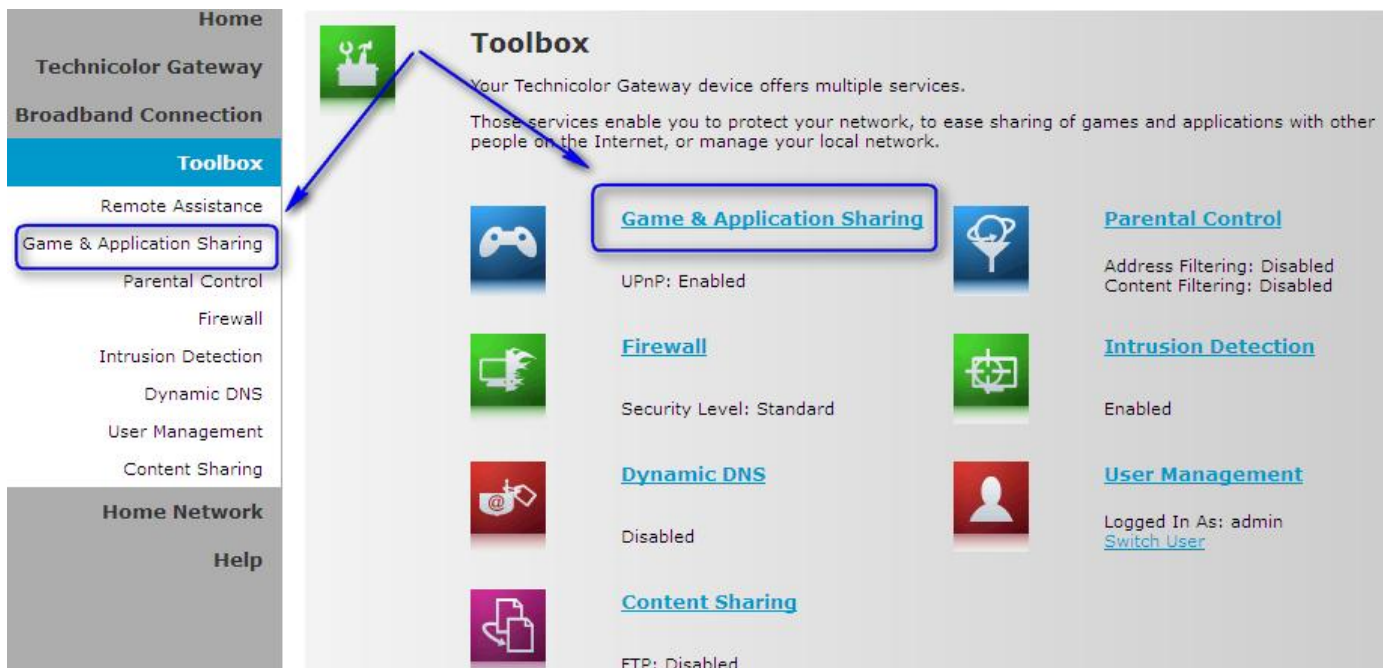
- ▶ [Game & Application Sharing](#)
- ▶ [Firewall](#): Standard
- ▶ [Parental Control](#)

**Home Network**

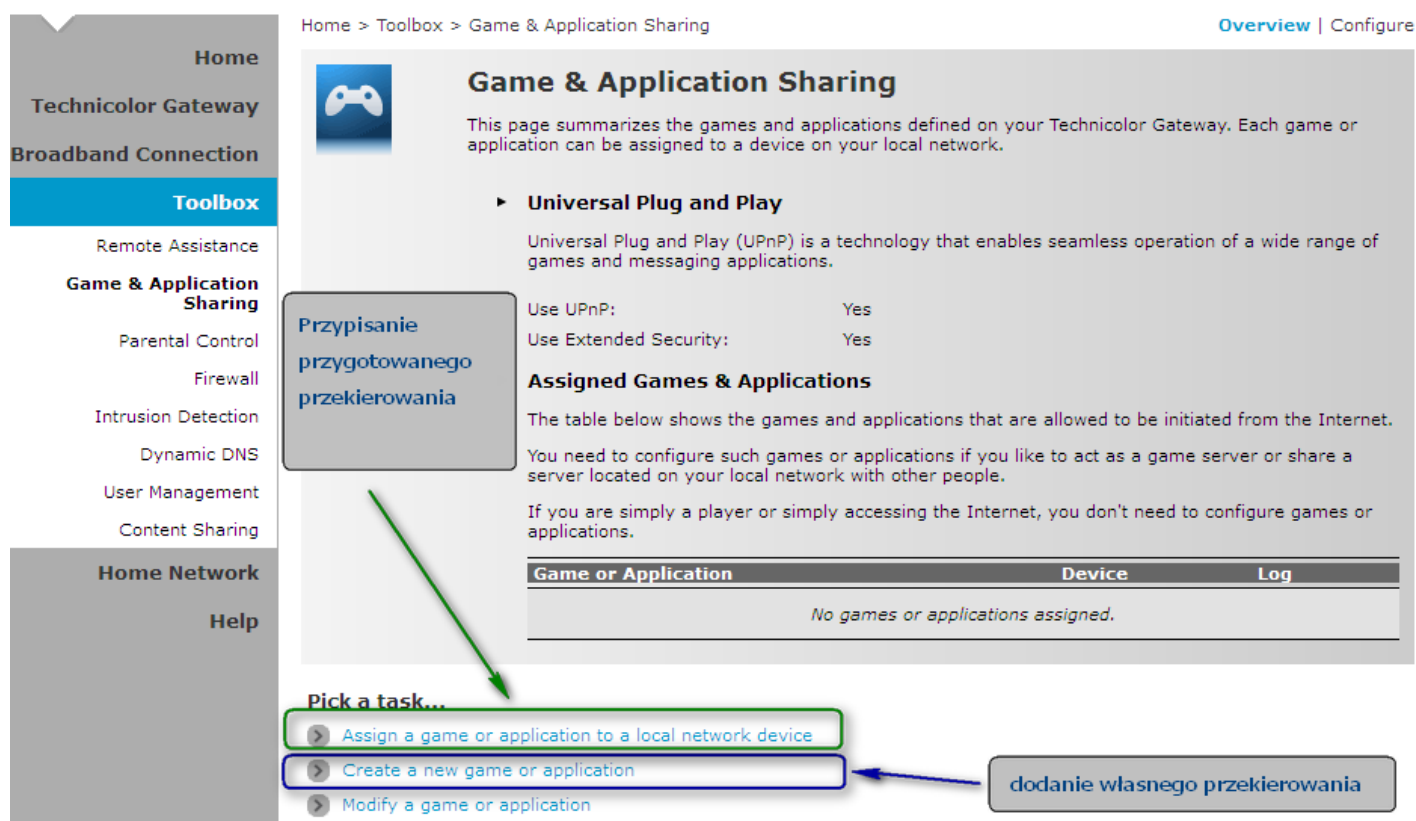
[Wireless](#): [wawerm-lap](#)

[Ethernet](#): [EwelinaLaptop](#)  
[Unknown-00-03-91-a0-37-9b](#)  
[Unknown-00-30-4f-1b-90-56](#)

Z menu **Toolbox** przechodzimy do **Game & Application Sharing**



Możemy wybrać gotowe przekierowanie z listy lub dodać własne przekierowanie. Dodajmy własną regułę, wybieramy **Create a new game or application**



Wpisz nazwę reguły, zaznacz **Manual Entry of Port Maps** i kliknij **Next**

## New Game or Application

Enter the name of the new game or application.

Name:

Select how you want to define the new game or application.

Clone Existing Game or Application

Manual Entry of Port Maps

AIM Talk

Wypełnij zakres portów przychodzących oraz zakres portów wyzwalanych w sieci wewnętrznej. Dla mojego przykładu to jeden port, dlatego **Port Range** wpisuję **80 to 80**, oraz **Translate To 80** i **Trigger Port 80**. Ustawiam protokół **TCP**. Na zakończenie kliknij **Add**.

## Mój serwer WWW

▶ **Game or Application Name**

New Name:

▶ **Game or Application Definition**

A game or application is made of one or more TCP/UDP port ranges. Each incoming port range can be translated into a different internal (local network) port range. Port ranges can be statically assigned to devices or dynamically assigned using an outgoing trigger.

Protocol	Port Range	Translate To ...	Trigger Protocol	Trigger Port
No port maps defined for this game or application.				
TCP	80 to 80	80	TCP	80

Mamy już gotową regułę. Teraz możemy przejść do przypisania przekierowania do wybranego komputera. Możemy też dopisać do tej samej reguły przekierowanie kolejnych portów wypełniając pola zaznaczone żółtą ramką. My wybieramy **Assign a game or application to a local network device**.

## Mój serwer WWW

▶ **Game or Application Name**

New Name:

▶ **Game or Application Definition**

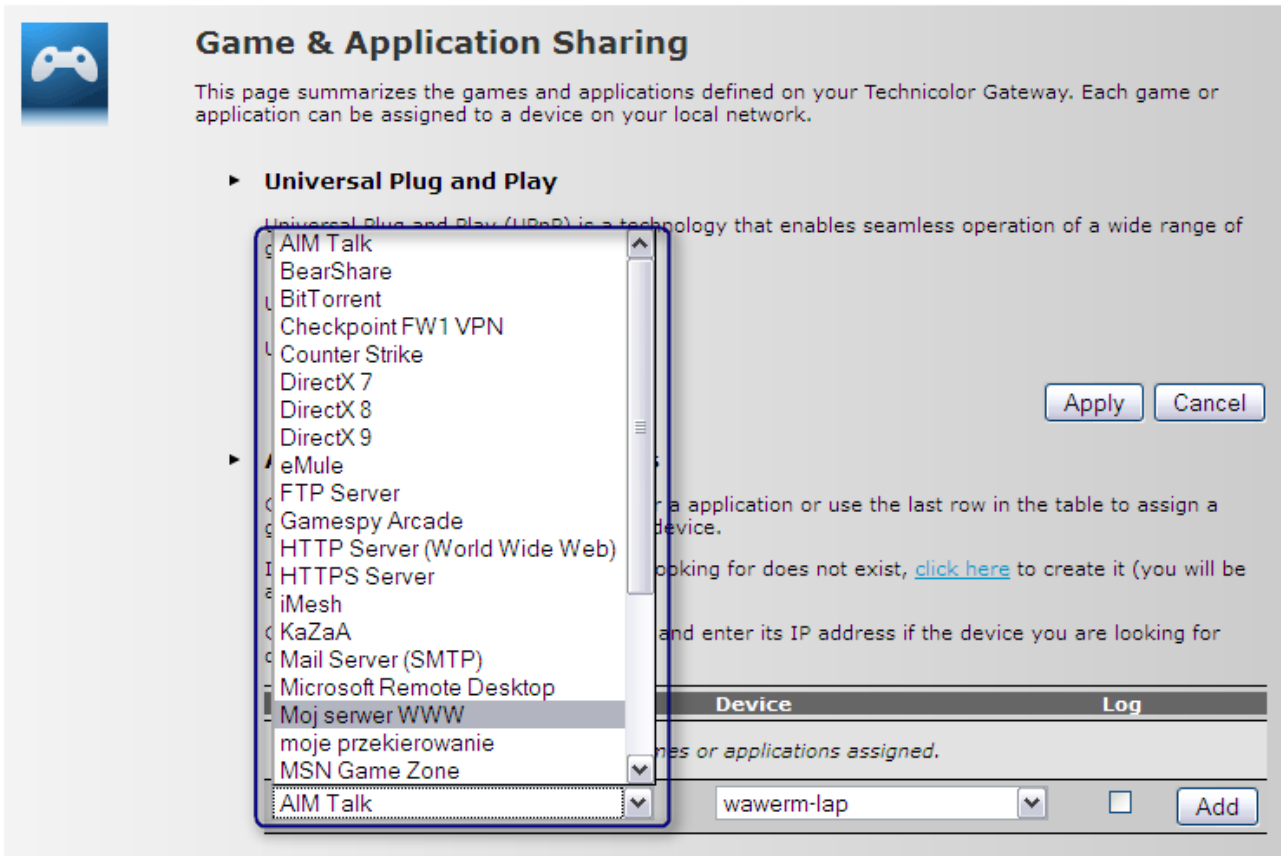
A game or application is made of one or more TCP/UDP port ranges. Each incoming port range can be translated into a different internal (local network) port range. Port ranges can be statically assigned to devices or dynamically assigned using an outgoing trigger.

Protocol	Port Range	Translate To ...	Trigger Protocol	Trigger Port
TCP	80 - 80	80 - 80	TCP	80
Any	<input type="text"/>	<input type="text"/>	Any	<input type="text"/>

Pick a task...

- Assign a game or application to a local network device
- Create a new game or application

Z rozwijanej listy wybieramy interesujące nas przekierowanie



**Game & Application Sharing**

This page summarizes the games and applications defined on your Technicolor Gateway. Each game or application can be assigned to a device on your local network.

► **Universal Plug and Play**

Universal Plug and Play (UPnP) is a technology that enables seamless operation of a wide range of games and messaging applications.

Use UPnP:

Use Extended Security:

► **Assigned Games & Applications**

Click on 'Unassign' to disable a game or a application or use the last row in the table to assign a game or application to a local network device.

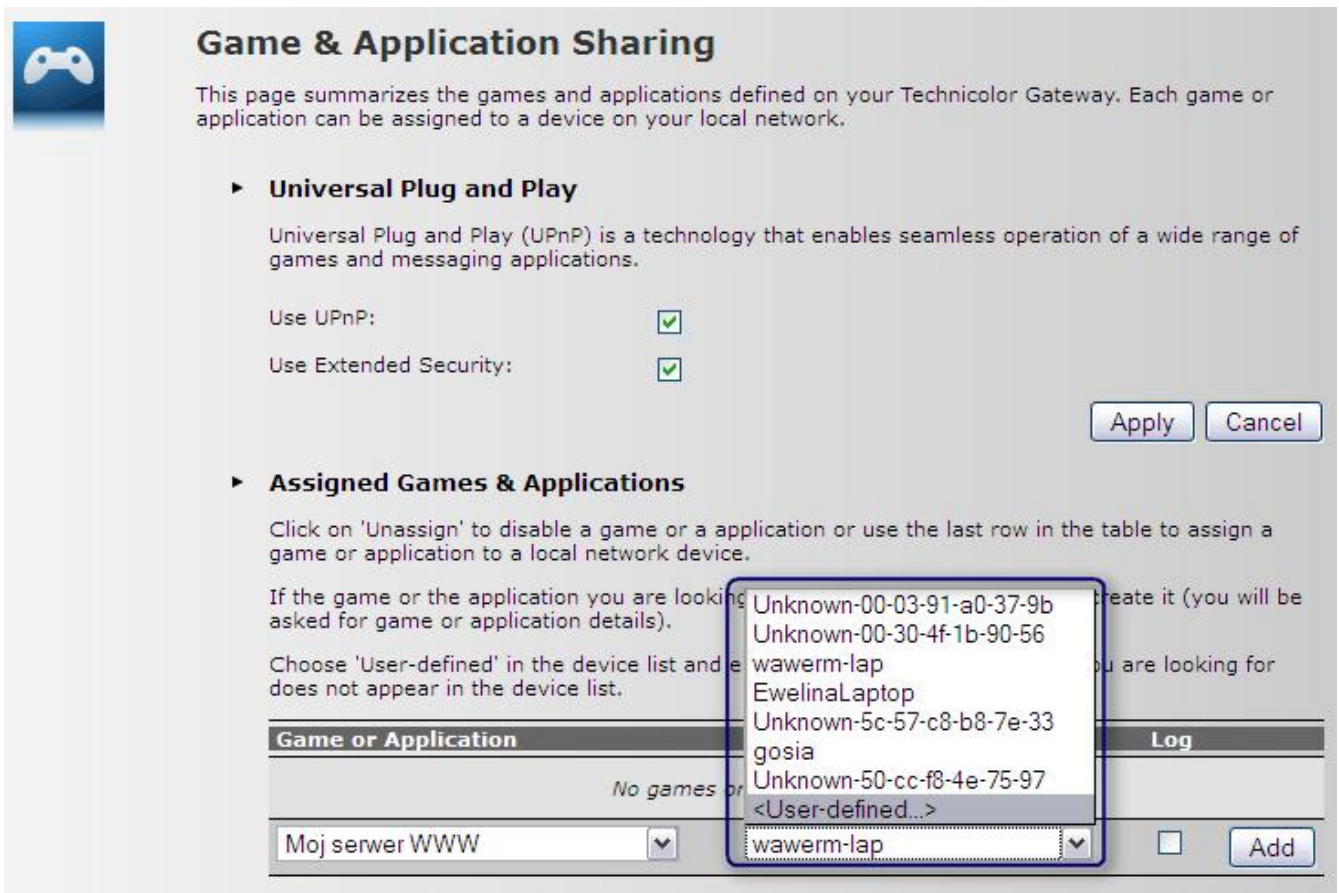
If the game or the application you are looking for does not exist, [click here](#) to create it (you will be asked for game or application details).

Choose 'User-defined' in the device list and enter its IP address if the device you are looking for does not appear in the device list.

Game or Application	Device	Log
Moj serwer WWW	wawerm-lap	

Apply Cancel

Podobnie z rozwijanej listy wybieramy komputer, do którego chcemy przypisać przekierowanie, jeśli komputera nie ma na liście wybieramy <User-defined...>



**Game & Application Sharing**

This page summarizes the games and applications defined on your Technicolor Gateway. Each game or application can be assigned to a device on your local network.

► **Assigned Games & Applications**

Click on 'Unassign' to disable a game or a application or use the last row in the table to assign a game or application to a local network device.

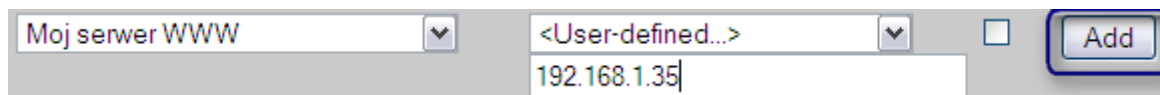
If the game or the application you are looking for does not exist, [click here](#) to create it (you will be asked for game or application details).

Choose 'User-defined' in the device list and enter its IP address if the device you are looking for does not appear in the device list.

Game or Application	Device	Log
Moj serwer WWW	wawerm-lap	

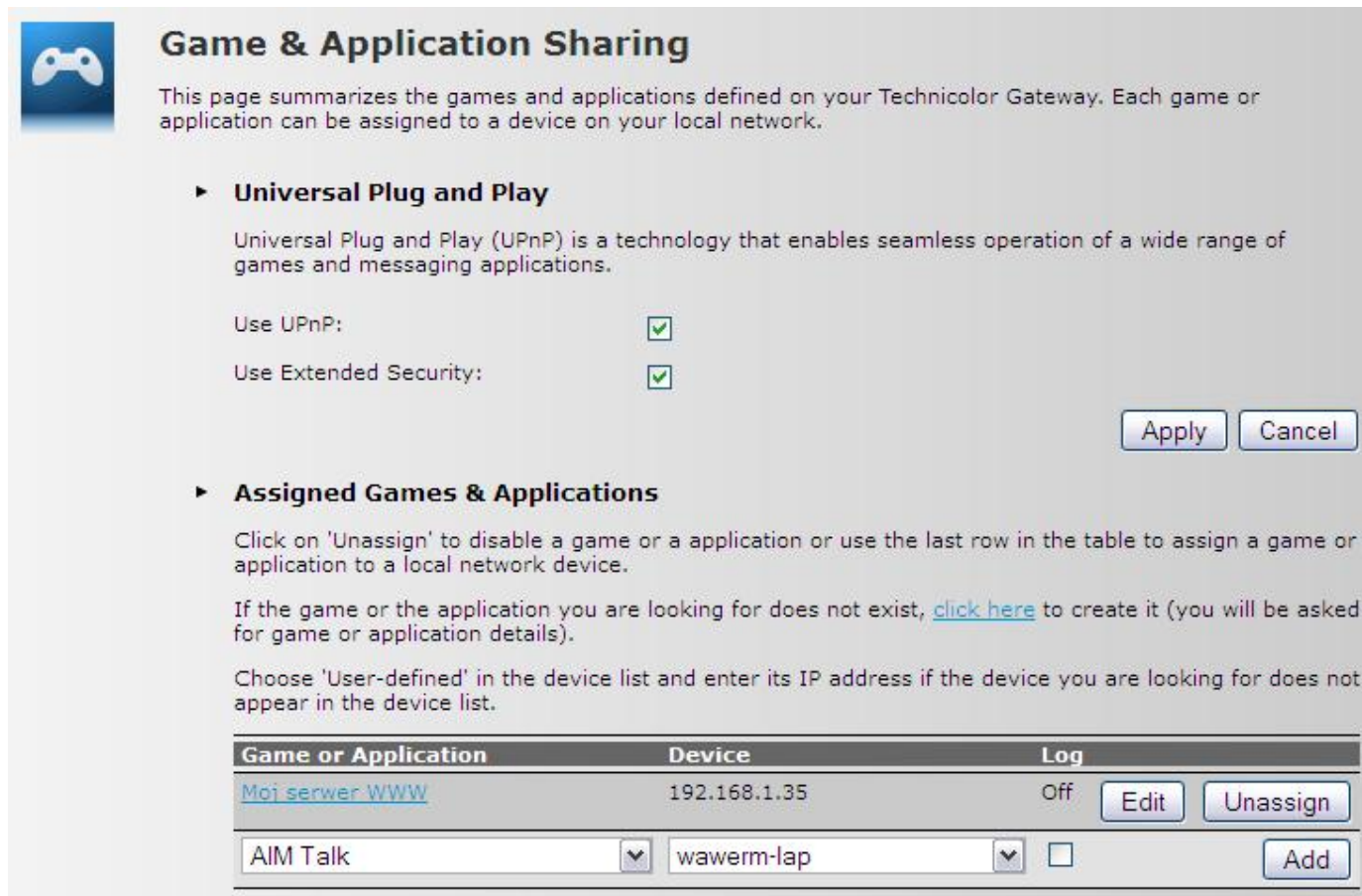
Apply Cancel

Wpisujemy wybrany adres IP i klikamy Add



Moj serwer WWW <User-defined...> 192.168.1.35 Add

OD tej pory mamy działające przekierowanie przychodzącego od strony WAN portu 80 na komputer o adresie IP 192.168.1.35 port 80



### Game & Application Sharing

This page summarizes the games and applications defined on your Technicolor Gateway. Each game or application can be assigned to a device on your local network.

► **Universal Plug and Play**

Universal Plug and Play (UPnP) is a technology that enables seamless operation of a wide range of games and messaging applications.

Use UPnP:

Use Extended Security:

Apply Cancel

► **Assigned Games & Applications**

Click on 'Unassign' to disable a game or a application or use the last row in the table to assign a game or application to a local network device.

If the game or the application you are looking for does not exist, [click here](#) to create it (you will be asked for game or application details).

Choose 'User-defined' in the device list and enter its IP address if the device you are looking for does not appear in the device list.

Game or Application	Device	Log
<a href="#">Moj serwer WWW</a>	192.168.1.35	Off <input type="button" value="Edit"/> <input type="button" value="Unassign"/>
AIM Talk	wawerm-lap	<input type="checkbox"/> <input type="button" value="Add"/>

Przy ustawieniu przekierowania portów bardzo ważne jest aby przekierować wszystkie porty niezbędne do prawidłowego działania aplikacji, np. jeśli serwer FTP uruchomimy na porcie 1025 i przekierujemy tylko ten port to koniecznie w kliencie FTP trzeba ustawić połączenie w trybie pasywnym